

What Happens Next?

St Saviour's has already signed up to the Parish Giving Scheme. All you need to do is to complete a Gift Form - available from your treasurer or Gift Aid secretary if one is not with this leaflet. You will need to tick the necessary box on the Gift Form to select an inflationary increase if you wish to do this.

Send the Gift Form direct to: PGS Office, Church House, College Green, Gloucester, GL1 2LY. Keep the left-hand side of the form as it explains what will happen next.

Finally, if you currently give by Standing Order you will need to cancel it with your bank.

Everyone benefits with the Parish Giving Scheme

- ≈ You are in total control of the amount you give.
- ≈ The Direct Debit guarantee means your gift is secure and safe.
- ≈ You can choose to increase your gift annually by inflation if you wish.
- ≈ Parish Giving Scheme tokens are available if you would like something to put in the offertory plate.
- ≈ Gift Aid is automatically claimed for the church every month, and this means reduced administration, less work for your treasurer and Gift Aid secretary and better cashflow.

Questions?

For further information, please contact Julie Jones, Executive Assistant: Parish Giving Scheme at the Diocese of Oxford (generosity@oxford.anglican.org / 01865 208288).

Alternatively, you can visit our page on the Diocese of Oxford's website <https://wp.me/P7JCUM-cog> for further information, which includes a section on FAQ's.



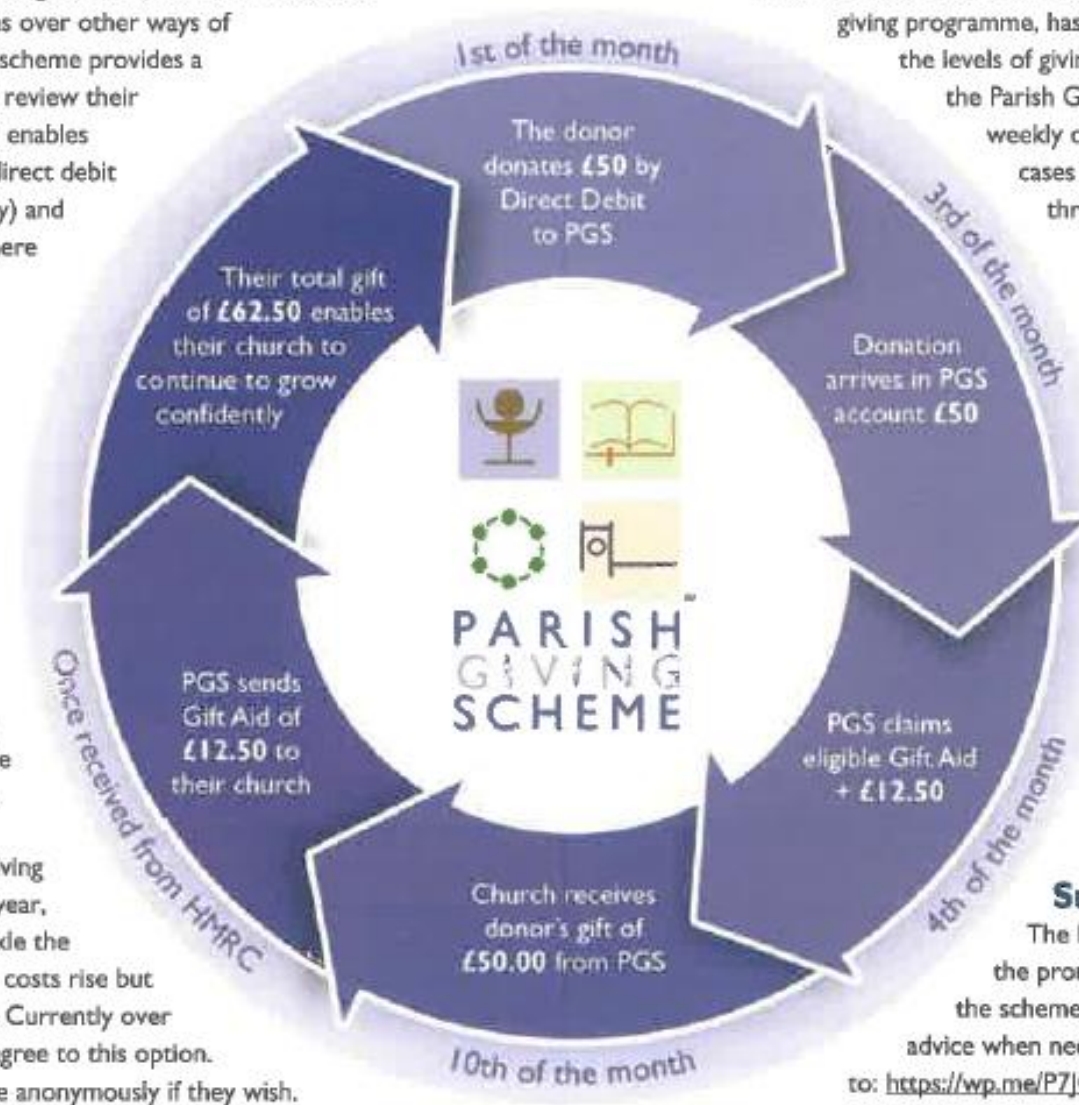
GIVING TO
ST SAVIOUR IN THE MARSHES
HACKNEY

The Parish Giving Scheme is an excellent means of encouraging greater generosity within your church, and it is now being introduced in the Diocese of Oxford. It has significant advantages over other ways of giving, and the introduction of the scheme provides a valuable opportunity for people to review their giving to their church. The scheme enables people to give to their church by direct debit (either monthly, quarterly or yearly) and claims the Gift Aid on their gift where applicable.

Benefits

The scheme has significant benefits for both the giver and the church compared to other ways of giving including:

- ≈ Gift aid is automatically processed by the Parish Giving Scheme every month, saving the church considerable time and improving cashflow.
- ≈ Givers can choose to automatically increase their giving by the rate of inflation every year, thus enabling churches to tackle the problem of static giving when costs rise but giving levels remain the same. Currently over half of givers on the scheme agree to this option.
- ≈ Givers can also choose to give anonymously if they wish.



Impact

The introduction of the scheme, particularly when run alongside a giving programme, has been shown to significantly increase the levels of giving. Over 20 dioceses have adopted the Parish Giving Scheme, with the average weekly donation through PGS being in some cases over 40% higher than regular giving through other ways.

Further Information

The scheme was established by the Diocese of Gloucester, and is now run by a charitable company with trustees from some of the dioceses who run the scheme. Over half the dioceses in the Church of England have now adopted the scheme. The scheme is paid for by the Diocese of Oxford and is funded through the Parish Share, so there is no additional cost for using the scheme.

Support

The Diocese provides churches with all the promotional material needed to promote the scheme, as well as offering support and advice when needed. For more information please go to: <https://wp.me/P7JUM-cog>

What is the Parish Giving Scheme?

The Parish Giving Scheme is a new, free way to help you plan your giving and, if you are a tax payer, to do so tax efficiently. Whether you currently give by Standing Order, the envelope scheme or by occasional donation, you can easily make the switch to this secure and efficient Direct Debit system. Tried, tested and highly recommended by over 20,000 people in over twenty dioceses for its reliability and ease of use, the Parish Giving Scheme can help you give in an easy, straight forward way.

How does the scheme work?

You give your regular donations for St Saviour's to the Parish Giving Scheme by Direct Debit on a monthly, quarterly or annual basis on the 1st of the month. Your full gift and any associated Gift Aid is automatically credited to the church by the Parish Giving Scheme in the same month. You can choose to inflation proof your gift which will really help our finances. You can also give anonymously if you wish. You can change or cancel the amount at any time by a simple phone call to the Parish Giving Scheme team.

Why does inflation matter?

Our church, like every household, faces increasing costs every year. If your giving does not keep pace with the increasing costs then your giving becomes worth less. The illustration below shows how much a donation falls in value if it does not change with inflation.

Year	2000	2005	2010	2014
Gift	£20.00	£17.88	£15.85	£13.95

The Parish Giving Scheme tackles this by enabling you to choose to increase your giving annually in line with inflation. You simply tick the relevant box on the gift form to authorise an inflationary increase. If you choose an inflationary increase the Parish Giving Scheme will send you a letter before it increases, and if you do not want it to increase then you simply call them to ask for it not to take place. So far, nearly two-thirds of givers across the participating dioceses have opted to increase their gift annually in line with inflation.

Why give in a new way?

The Church of England has a Christian presence in every community, seeking to be at the heart of all our cities, towns and villages. We serve our community by sharing our faith and values, worshipping together and by our wonderful buildings. This valuable contribution to our community comes at a cost, which is largely met by personal gifts from you and other church members. For us to grow and fulfil the vision we have for the future then we need to increase our giving, and have more people giving regularly. Money often dominates too many agendas in the church, and takes up a lot of volunteers' time in counting the money, administration and claiming Gift Aid. If you sign up to the Parish Giving Scheme more of your money and our time can be devoted to God's mission.

How Much Should I Give?

Giving by individuals is essential to secure our ability to serve its community and for the Church of England to minister across the country. How much you give is a matter for your personal and prayerful reflection.

Everything comes from you, and we have given you only what comes from your hand. (1 Chronicles 29:14)

Our giving should reflect not only our willingness to give, but also our ability to give; since individual circumstances differ significantly, so will our individual gifts. A starting point when reflecting on our Christian giving is that when giving to others we should give in proportion to what we ourselves receive from God i.e. in proportion to our income. This practice of tithing has Biblical origins and the "tithe" literally means a tenth.

For some time, the Church of England General Synod has encouraged us as Christians to review our giving annually and to give a proportion of our income. The initial target suggested by General Synod is 5% of post-tax income to and through the church and a similar amount to other kingdom building charities.

You can choose to calculate your proportionate giving on pre-tax, post-tax or disposable income but do whatever feels right for you.

Each person should give what they have decided in their heart to give, not reluctantly or under compulsion, for God loves a cheerful giver. (2 Corinthians 9:7)

AN INTRODUCTION TO THE



"We launched the Parish Giving Scheme as part of a recent Stewardship Campaign across all four parishes of our rural Benefice. So far - a month later - we have seen an amazing increase of just over 40% on pledged giving for the coming year. PGS is simple and easy to set up, saves on administration within the Benefice and, with the additional advantage that donors can increase their giving by inflation automatically each year, safeguards against static giving. We are delighted with the scheme and commend it to other parishes."

Mark Abrey, Rector of the Chase Benefice

"In my previous parish I saw the Parish Giving Scheme transform the life of our hard-pressed Treasurer. While initially wary, within six months our income had increased by a double-digit percentage with no extra administration. The monthly Gift Aid income just came in without any hassle. What's not to like?"

Philip Cochrane, Vicar of St Mary's, Banbury

For further information, please contact Julie Jones, Executive Assistant: Parish Giving Scheme at the Diocese of Oxford on 01865 208288 or email generosity@oxford.anglican.org.

God has given so much to us. We have so much to be thankful for. We have so much to give to one another and contribute to the whole body of Christ and to God's mission for the world.

Across the Diocese of Oxford, I see countless examples of inspiring and humbling work by Christ-like churches that are contemplative, compassionate and courageous. We are working together to agree some specific priorities for us as a diocese over the next few years. What is clear is that we will need to show generosity in all areas of our lives if we are to fulfil God's mission within the communities we serve.

As a diocese, I believe we need to make a step change together in the way we give if we are to be the contemplative, compassionate and courageous church that God is calling us to be.

The Parish Giving Scheme, which enables people to give to their church by direct debit, is an excellent initiative. It is easy to join, much easier for the church to administer than other ways of giving and has been shown to increase giving significantly in other dioceses. Do please join the scheme, and so enable us to fulfil the work that God is calling us to do.

With love and prayers for all you do and are.

+ Steven Oxford

